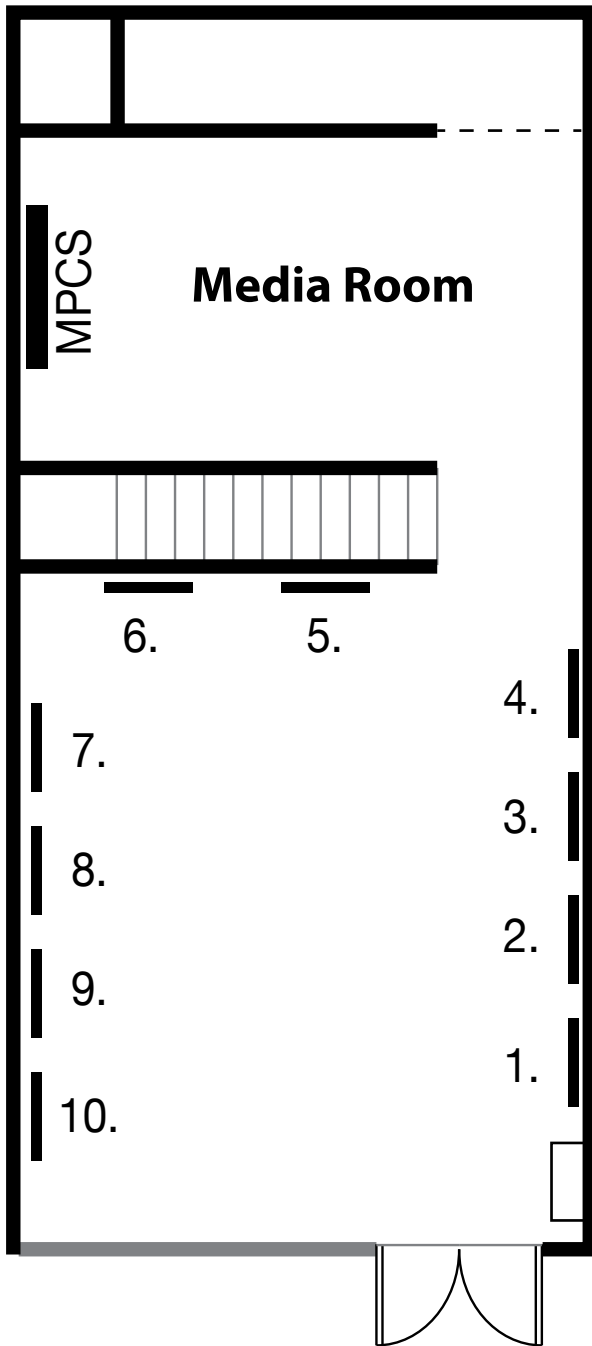


Syncretic Birthrights

Odera Igbokwe

May 12th - July 8th, 2023

Curated by Whess Harman



Exhibition Map:

1. ***The Labyrinth***, 2021
Acrylic painting on watercolour paper
2. ***The Altar***, 2023
Oil painting on wooden panel
3. ***The Veil***, 2023
Oil painting on wooden panel
4. ***The Opening***, 2019
Oil painting on wooden panel
5. ***The Breath of Life***, 2020
Oil painting on wooden panel
6. ***The Volcano***, 2020
Oil painting on wooden panel



grunt gallery

#116 - 350 East 2nd Avenue

Vancouver, BC, V5T 4R8

Phone: 604-875-9516

Hours: Tuesday – Saturday, Noon-5pm

Syncretic Birthrights

Odera Igbokwe

Exhibition Map Continues (2):

7. ***The Spirit Child***, 2021
Oil painting on wooden panel
8. ***The Sacrifice***, 2023
Oil painting on wooden panel
9. ***The Griot***, 2022
Oil painting on watercolor paper
10. ***Oya's Gate***, 2017
Oil painting on wooden panel

MPCS: Mount Pleasant Community
Art Screen, Satellite Screen

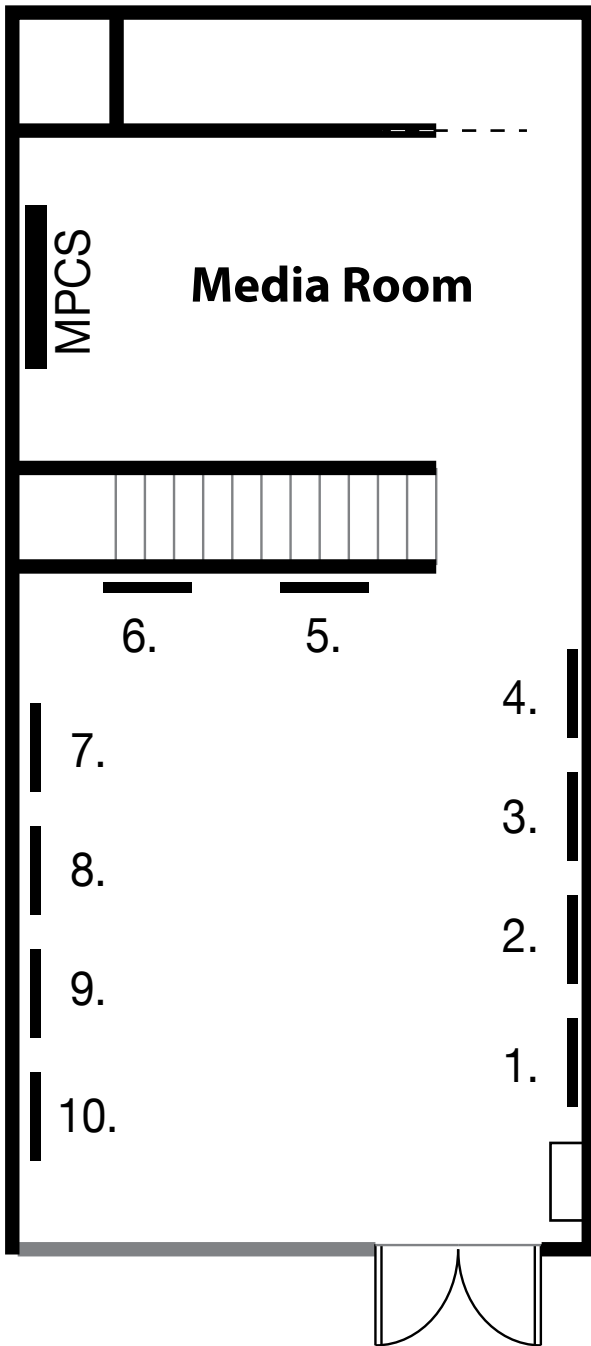
grunt gallery

#116 - 350 East 2nd Avenue

Vancouver, BC, V5T 4R8

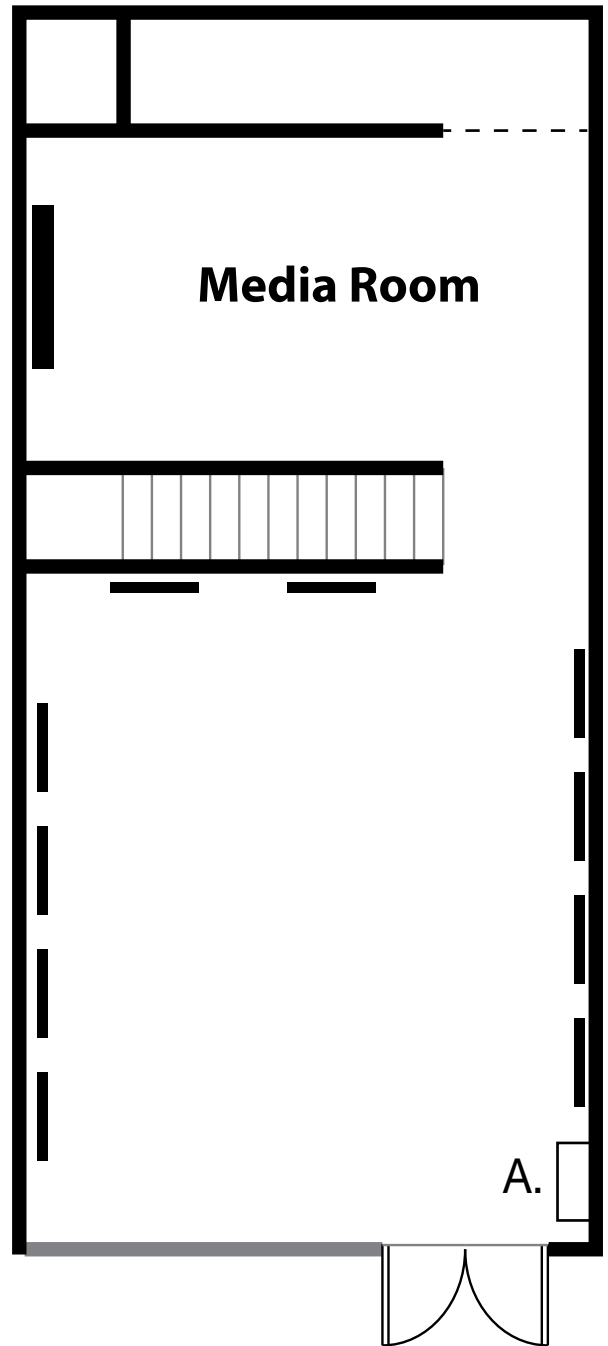
Phone: 604-875-9516

Hours: Tuesday – Saturday, Noon-5pm



Accessibility Notes:

- Artworks are not meant to be touched. This exhibition has tactile drawings available for each work within a brailled covered folio, as well as written visual descriptions in the Exhibition Binder in English at the welcome station (A).
- A power outlet is also here (A).
- Masks are requested in the space, and a sanitization station (A) is available for handcleaning upon entry.
- A creative access tour is available in the orange carrying case to the left of the welcome station. You can carry this or pull out the small YOTO player and use your own headphones (a). A written transcript is available in the binder.
- Any questions or feedback are welcome at access@grunt.ca or by calling 604-875-9516.



Thursdays Low Sensory/Voice-Off Hours:

From Noon-5 PM, we will offer a low-sensory and/or voice-off experience to visitors wishing to visit the space and our exhibitions.

Goals: Scent-reduced, silent, with accessible resources.
Masks are **required** during Low Sensory visiting hours.
To learn more visit grunt.ca/low-sensory.