

## ***Smokes, Sings Loud***

Lori Blondeau and Michelle Sound  
Curated by Whess Harman, Dan Pon,  
and Vanessa Kwan

February 4th - March 12th, 2022

### **Exhibition Map:**

1. ***Bleached***, 1999  
Lori Blondeau

Video with sound  
(English captions)

2. ***Deadly Aunties***, 2021  
Michelle Sound

Mixed Media

#### Note:

Please do not touch textiles and  
artworks. Thank you.



#### **grunt gallery**

#116 - 350 East 2nd Avenue

Vancouver, BC, V5T 4R8

Phone: 604-875-9516

Hours: Tuesday – Saturday, Noon-5pm

## Work Credits:

Lori Blondeau, *Bleached*.

October 19, 1999.

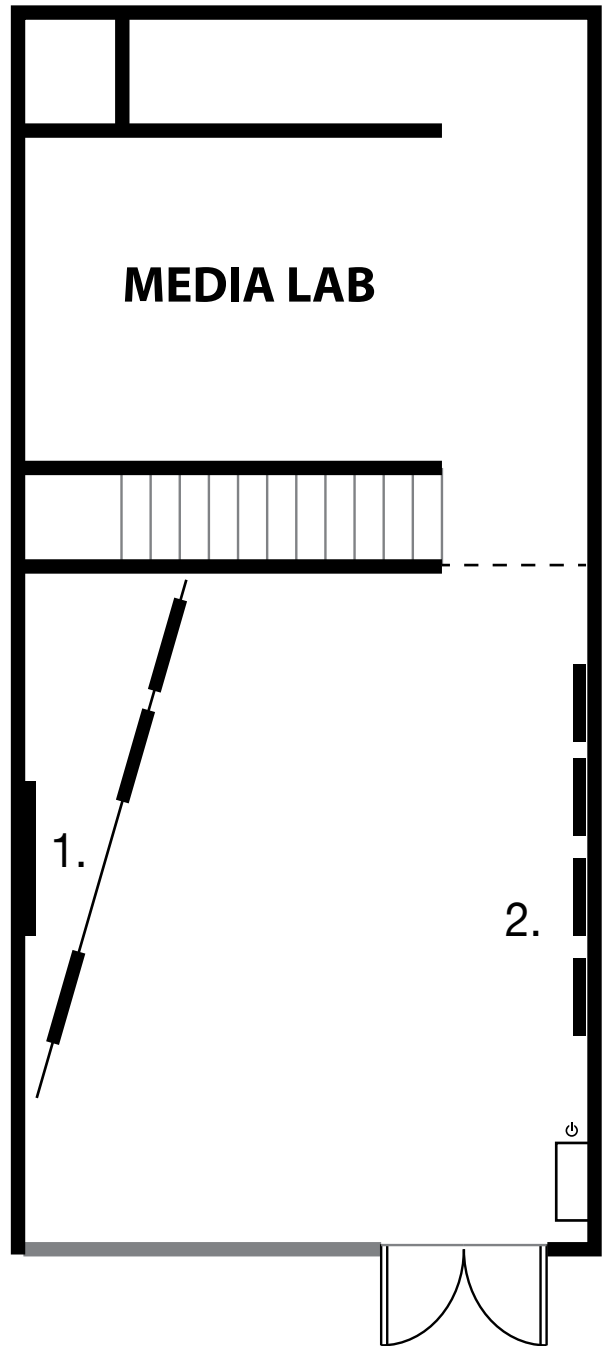
Featuring Dana Claxton,  
Suzanne Kilroy, and John Powell.

Originally curated by Lynn Hill for  
ALA Curatorial Collective's series  
at Havana Gallery. Part of LIVE at the  
End of the Century.

Video documentation by  
Mike MacDonald.

## Accessibility Notes:

- Artworks are not meant to be touched. A visual description of all works are available in the Exhibition Binder (in English).
- Masks are mandatory in the space, and a sanitization station is available for handcleaning upon entry.
- Video transcripts are available via QR or in exhibition binder (at entrance).
- Any questions or feedback are welcome at [access@grunt.ca](mailto:access@grunt.ca) or by calling 604-875-9516.



Thursdays: (new) Low Sensory/Voice-Off Days: From Noon-5 P M, our exhibition Manager, Kay Slater, will offer a low-sensory and/or voice-off experience to visitors wishing to visit the space and our exhibitions. Goals: Scent-reduced, silent, lower-light, and captioned space. To learn more visit [grunt.ca/low-sensory](http://grunt.ca/low-sensory).